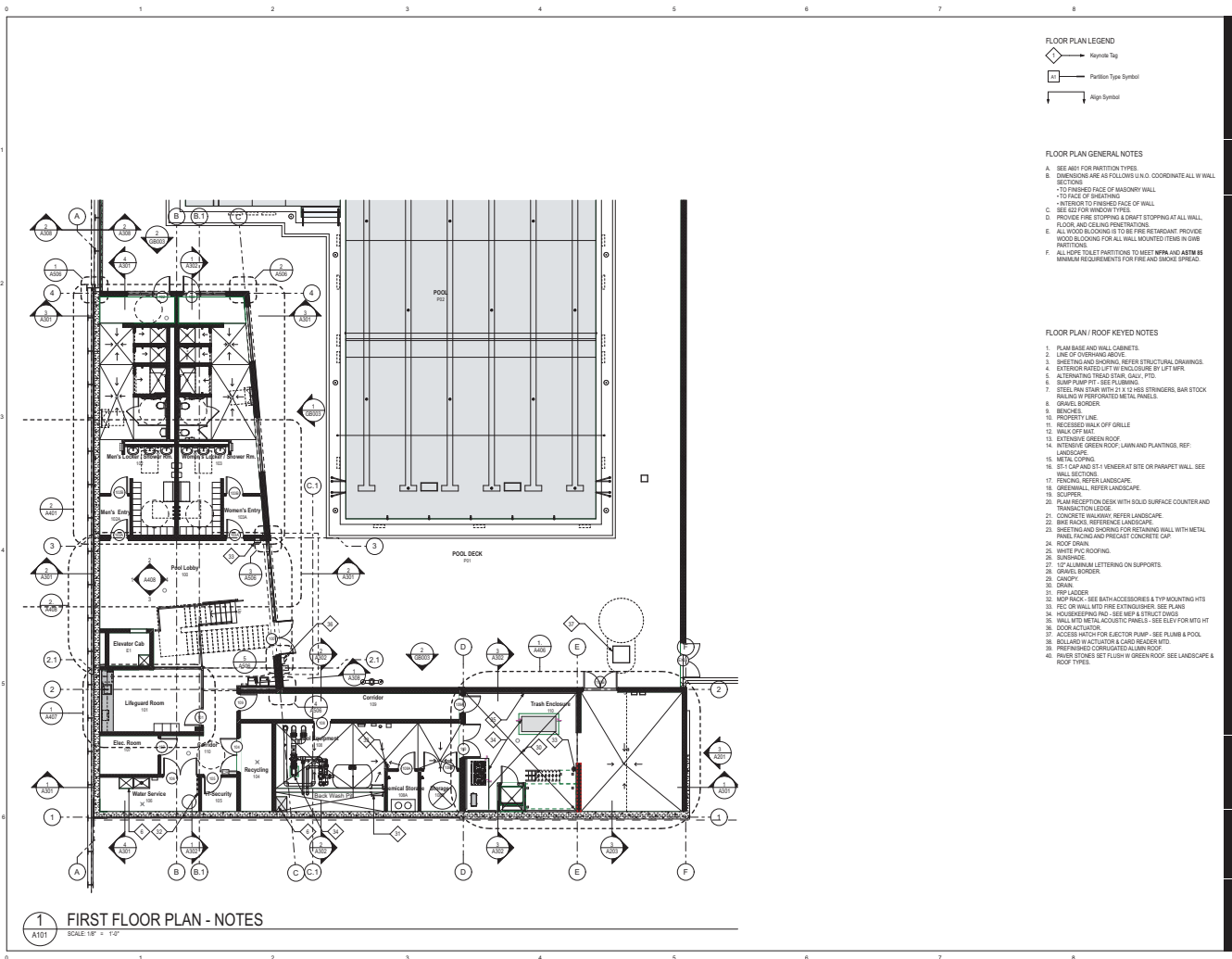
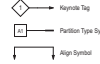


APPLICABLE CODES:	ZONING NOTES:	ZONING NOTES (Continued):	BUILDING ANALYSIS:	BUILDINGS (Continued):	OCCUPANT LOAD FACTORS:
<p>Building: 12 DCMR A, Building Code Supplement, International Building Code - 2012 Edition (IBC)</p> <p>Electrical: 12 DCMR C, Electrical Code Supplement, National Electrical Code (NEC) - 2011 Edition</p> <p>Mechanical: 12 DCMR E, Mechanical Code Supplement, International Mechanical Code - 2012 Edition</p> <p>Plumbing: 12 DCMR E, Plumbing Code Supplement, International Plumbing Code - 2012 Edition</p> <p>Fire Prevention: 12 DCMR H, Fire Code Supplement, International Fire Code - 2012 Edition (IFC)</p> <p>Accessibility: 2010 Americans with Disabilities Act Standards for Accessible Design (ADA), (CA) 117.1, Accessible and Usable Buildings and Facilities - 2002 Edition</p> <p>Other: National Fire Protection Association (NFPA) standards as referenced by the 2012 IBC, including NFPA 10, NFPA 13, NFPA 13A, etc.</p> <p>12 DCMR D, Fuel Gas Code Supplement, International Fuel Gas Code - 2012 Edition</p> <p>12 DCMR E, Energy Code Supplement, International Energy Conservation Code - 2012 Edition</p> <p>12 DCMR K, Green Construction Code Supplement, International Green Construction Code - 2012 Edition</p> <p>12 DCMR L, Swimming Pool and Spa Code Supplement, International Swimming Pool and Spa Code - 2012 Edition</p> <p>DCM 10-1, DCMA Environmental Policy Act of 1989</p>	<p>Zoning has been reviewed by Lorraine L. Coak, DCRA Zoning Administrator in Zoning Determination letter dated 12/19/10.</p> <p>Project Name: Hearth Park Pool</p> <p>Project Address: 3650 37th Street, NW Washington, DC 20008</p> <p>Square: 1005</p> <p>Lot: 802</p> <p>Zoning Classification: R-1B</p> <p>Lot Area: 191,888 Square Feet (4.4 Acres)</p> <p>Flood Zone: FEMA Flood Zone Area 110010004C Zone X - Minimal Flood Hazard</p> <p>Existing Use: Department of Parks and Recreation Park bounded by 37th St to the west, Quebec St. to the south, Idaho Ave to the east and Idaho Ave. District Department of Transportation (DDOT) right-of-way and District C-175 (Beverly) District to the north. The site is an open, partially wooded field with a natural grass soccer field and tennis courts, located in the southwest corner of the site.</p> <p>Proposed Use: Class 1 outdoor pool with natural grass soccer field in the northern portion of the site, outdoor pool and pool house, pool deck, office, storage and pool equipment and storage containers and 2 tennis courts. No on-site parking is planned.</p> <p>Section C-1504.2: Public education buildings and structures, public recreation and community centers, and public libraries shall be permitted a maximum floor area ratio as set forth in Table C-1 Section 1504.2.3.3. The FAR shall be 2.0. The proposed building is a two-story structure with a total of 1,005 sq ft.</p> <p>FAR will be based on the Use Category of Parks and Recreation for the site as defined under Section B. 2002.2. Building area is 1,005 sq ft which is within the maximum permitted gross floor area and complies with the FAR requirement for the R-1B Zoning District.</p> <p>Section C-1602.2: Public recreation and community centers may be located to a height as follows: in R-1, R-2, R-3, R-4, R-5, R-6, R-7, R-8, R-9, R-10, R-11, R-12, R-13, R-14, R-15, R-16, R-17, R-18, R-19, R-20, R-21, R-22, R-23, R-24, R-25, R-26, R-27, R-28, R-29, R-30, R-31, R-32, R-33, R-34, R-35, R-36, R-37, R-38, R-39, R-40, R-41, R-42, R-43, R-44, R-45, R-46, R-47, R-48, R-49, R-50, R-51, R-52, R-53, R-54, R-55, R-56, R-57, R-58, R-59, R-60, R-61, R-62, R-63, R-64, R-65, R-66, R-67, R-68, R-69, R-70, R-71, R-72, R-73, R-74, R-75, R-76, R-77, R-78, R-79, R-80, R-81, R-82, R-83, R-84, R-85, R-86, R-87, R-88, R-89, R-90, R-91, R-92, R-93, R-94, R-95, R-96, R-97, R-98, R-99, R-100, R-101, R-102, R-103, R-104, R-105, R-106, R-107, R-108, R-109, R-110, R-111, R-112, R-113, R-114, R-115, R-116, R-117, R-118, R-119, R-120, R-121, R-122, R-123, R-124, R-125, R-126, R-127, R-128, R-129, R-130, R-131, R-132, R-133, R-134, R-135, R-136, R-137, R-138, R-139, R-140, R-141, R-142, R-143, R-144, R-145, R-146, R-147, R-148, R-149, R-150, R-151, R-152, R-153, R-154, R-155, R-156, R-157, R-158, R-159, R-160, R-161, R-162, R-163, R-164, R-165, R-166, R-167, R-168, R-169, R-170, R-171, R-172, R-173, R-174, R-175, R-176, R-177, R-178, R-179, R-180, R-181, R-182, R-183, R-184, R-185, R-186, R-187, R-188, R-189, R-190, R-191, R-192, R-193, R-194, R-195, R-196, R-197, R-198, R-199, R-200, R-201, R-202, R-203, R-204, R-205, R-206, R-207, R-208, R-209, R-210, R-211, R-212, R-213, R-214, R-215, R-216, R-217, R-218, R-219, R-220, R-221, R-222, R-223, R-224, R-225, R-226, R-227, R-228, R-229, R-230, R-231, R-232, R-233, R-234, R-235, R-236, R-237, R-238, R-239, R-240, R-241, R-242, R-243, R-244, R-245, R-246, R-247, R-248, R-249, R-250, R-251, R-252, R-253, R-254, R-255, R-256, R-257, R-258, R-259, R-260, R-261, R-262, R-263, R-264, R-265, R-266, R-267, R-268, R-269, R-270, R-271, R-272, R-273, R-274, R-275, R-276, R-277, R-278, R-279, R-280, R-281, R-282, R-283, R-284, R-285, R-286, R-287, R-288, R-289, R-290, R-291, R-292, R-293, R-294, R-295, R-296, R-297, R-298, R-299, R-300, R-301, R-302, R-303, R-304, R-305, R-306, R-307, R-308, R-309, R-310, R-311, R-312, R-313, R-314, R-315, R-316, R-317, R-318, R-319, R-320, R-321, R-322, R-323, R-324, R-325, R-326, R-327, R-328, R-329, R-330, R-331, R-332, R-333, R-334, R-335, R-336, R-337, R-338, R-339, R-340, R-341, R-342, R-343, R-344, R-345, R-346, R-347, R-348, R-349, R-350, R-351, R-352, R-353, R-354, R-355, R-356, R-357, R-358, R-359, R-360, R-361, R-362, R-363, R-364, R-365, R-366, R-367, R-368, R-369, R-370, R-371, R-372, R-373, R-374, R-375, R-376, R-377, R-378, R-379, R-380, R-381, R-382, R-383, R-384, R-385, R-386, R-387, R-388, R-389, R-390, R-391, R-392, R-393, R-394, R-395, R-396, R-397, R-398, R-399, R-400, R-401, R-402, R-403, R-404, R-405, R-406, R-407, R-408, R-409, R-410, R-411, R-412, R-413, R-414, R-415, R-416, R-417, R-418, R-419, R-420, R-421, R-422, R-423, R-424, R-425, R-426, R-427, R-428, R-429, R-430, R-431, R-432, R-433, R-434, R-435, R-436, R-437, R-438, R-439, R-440, R-441, R-442, R-443, R-444, R-445, R-446, R-447, R-448, R-449, R-450, R-451, R-452, R-453, R-454, R-455, R-456, R-457, R-458, R-459, R-460, R-461, R-462, R-463, R-464, R-465, R-466, R-467, R-468, R-469, R-470, R-471, R-472, R-473, R-474, R-475, R-476, R-477, R-478, R-479, R-480, R-481, R-482, R-483, R-484, R-485, R-486, R-487, R-488, R-489, R-490, R-491, R-492, R-493, R-494, R-495, R-496, R-497, R-498, R-499, R-500, R-501, R-502, R-503, R-504, R-505, R-506, R-507, R-508, R-509, R-510, R-511, R-512, R-513, R-514, R-515, R-516, R-517, R-518, R-519, R-520, R-521, R-522, R-523, R-524, R-525, R-526, R-527, R-528, R-529, R-530, R-531, R-532, R-533, R-534, R-535, R-536, R-537, R-538, R-539, R-540, R-541, R-542, R-543, R-544, R-545, R-546, R-547, R-548, R-549, R-550, R-551, R-552, R-553, R-554, R-555, R-556, R-557, R-558, R-559, R-560, R-561, R-562, R-563, R-564, R-565, R-566, R-567, R-568, R-569, R-570, R-571, R-572, R-573, R-574, R-575, R-576, R-577, R-578, R-579, R-580, R-581, R-582, R-583, R-584, R-585, R-586, R-587, R-588, R-589, R-590, R-591, R-592, R-593, R-594, R-595, R-596, R-597, R-598, R-599, R-600, R-601, R-602, R-603, R-604, R-605, R-606, R-607, R-608, R-609, R-610, R-611, R-612, R-613, R-614, R-615, R-616, R-617, R-618, R-619, R-620, R-621, R-622, R-623, R-624, R-625, R-626, R-627, R-628, R-629, R-630, R-631, R-632, R-633, R-634, R-635, R-636, R-637, R-638, R-639, R-640, R-641, R-642, R-643, R-644, R-645, R-646, R-647, R-648, R-649, R-650, R-651, R-652, R-653, R-654, R-655, R-656, R-657, R-658, R-659, R-660, R-661, R-662, R-663, R-664, R-665, R-666, R-667, R-668, R-669, R-670, R-671, R-672, R-673, R-674, R-675, R-676, R-677, R-678, R-679, R-680, R-681, R-682, R-683, R-684, R-685, R-686, R-687, R-688, R-689, R-690, R-691, R-692, R-693, R-694, R-695, R-696, R-697, R-698, R-699, R-700, R-701, R-702, R-703, R-704, R-705, R-706, R-707, R-708, R-709, R-710, R-711, R-712, R-713, R-714, R-715, R-716, R-717, R-718, R-719, R-720, R-721, R-722, R-723, R-724, R-725, R-726, R-727, R-728, R-729, R-730, R-731, R-732, R-733, R-734, R-735, R-736, R-737, R-738, R-739, R-740, R-741, R-742, R-743, R-744, R-745, R-746, R-747, R-748, R-749, R-750, R-751, R-752, R-753, R-754, R-755, R-756, R-757, R-758, R-759, R-760, R-761, R-762, R-763, R-764, R-765, R-766, R-767, R-768, R-769, R-770, R-771, R-772, R-773, R-774, R-775, R-776, R-777, R-778, R-779, R-780, R-781, R-782, R-783, R-784, R-785, R-786, R-787, R-788, R-789, R-790, R-791, R-792, R-793, R-794, R-795, R-796, R-797, R-798, R-799, R-800, R-801, R-802, R-803, R-804, R-805, R-806, R-807, R-808, R-809, R-810, R-811, R-812, R-813, R-814, R-815, R-816, R-817, R-818, R-819, R-820, R-821, R-822, R-823, R-824, R-825, R-826, R-827, R-828, R-829, R-830, R-831, R-832, R-833, R-834, R-835, R-836, R-837, R-838, R-839, R-840, R-841, R-842, R-843, R-844, R-845, R-846, R-847, R-848, R-849, R-850, R-851, R-852, R-853, R-854, R-855, R-856, R-857, R-858, R-859, R-860, R-861, R-862, R-863, R-864, R-865, R-866, R-867, R-868, R-869, R-870, R-871, R-872, R-873, R-874, R-875, R-876, R-877, R-878, R-879, R-880, R-881, R-882, R-883, R-884, R-885, R-886, R-887, R-888, R-889, R-890, R-891, R-892, R-893, R-894, R-895, R-896, R-897, R-898, R-899, R-900, R-901, R-902, R-903, R-904, R-905, R-906, R-907, R-908, R-909, R-910, R-911, R-912, R-913, R-914, R-915, R-916, R-917, R-918, R-919, R-920, R-921, R-922, R-923, R-924, R-925, R-926, R-927, R-928, R-929, R-930, R-931, R-932, R-933, R-934, R-935, R-936, R-937, R-938, R-939, R-940, R-941, R-942, R-943, R-944, R-945, R-946, R-947, R-948, R-949, R-950, R-951, R-952, R-953, R-954, R-955, R-956, R-957, R-958, R-959, R-960, R-961, R-962, R-963, R-964, R-965, R-966, R-967, R-968, R-969, R-970, R-971, R-972, R-973, R-974, R-975, R-976, R-977, R-978, R-979, R-980, R-981, R-982, R-983, R-984, R-985, R-986, R-987, R-988, R-989, R-990, R-991, R-992, R-993, R-994, R-995, R-996, R-997, R-998, R-999, R-1000, R-1001, R-1002, R-1003, R-1004, R-1005, R-1006, R-1007, R-1008, R-1009, R-1010, R-1011, R-1012, R-1013, R-1014, R-1015, R-1016, R-1017, R-1018, R-1019, R-1020, R-1021, R-1022, R-1023, R-1024, R-1025, R-1026, R-1027, R-1028, R-1029, R-1030, R-1031, R-1032, R-1033, R-1034, R-1035, R-1036, R-1037, R-1038, R-1039, R-1040, R-1041, R-1042, R-1043, R-1044, R-1045, R-1046, R-1047, R-1048, R-1049, R-1050, R-1051, R-1052, R-1053, R-1054, R-1055, R-1056, R-1057, R-1058, R-1059, R-1060, R-1061, R-1062, R-1063, R-1064, R-1065, R-1066, R-1067, R-1068, R-1069, R-1070, R-1071, R-1072, R-1073, R-1074, R-1075, R-1076, R-1077, R-1078, R-1079, R-1080, R-1081, R-1082, R-1083, R-1084, R-1085, R-1086, R-1087, R-1088, R-1089, R-1090, R-1091, R-1092, R-1093, R-1094, R-1095, R-1096, R-1097, R-1098, R-1099, R-1100, R-1101, R-1102, R-1103, R-1104, R-1105, R-1106, R-1107, R-1108, R-1109, R-1110, R-1111, R-1112, R-1113, R-1114, R-1115, R-1116, R-1117, R-1118, R-1119, R-1120, R-1121, R-1122, R-1123, R-1124, R-1125, R-1126, R-1127, R-1128, R-1129, R-1130, R-1131, R-1132, R-1133, R-1134, R-1135, R-1136, R-1137, R-1138, R-1139, R-1140, R-1141, R-1142, R-1143, R-1144, R-1145, R-1146, R-1147, R-1148, R-1149, R-1150, R-1151, R-1152, R-1153, R-1154, R-1155, R-1156, R-1157, R-1158, R-1159, R-1160, R-1161, R-1162, R-1163, R-1164, R-1165, R-1166, R-1167, R-1168, R-1169, R-1170, R-1171, R-1172, R-1173, R-1174, R-1175, R-1176, R-1177, R-1178, R-1179, R-1180, R-1181, R-1182, R-1183, R-1184, R-1185, R-1186, R-1187, R-1188, R-1189, R-1190, R-1191, R-1192, R-1193, R-1194, R-1195, R-1196, R-1197, R-1198, R-1199, R-1200, R-1201, R-1202, R-1203, R-1204, R-1205, R-1206, R-1207, R-1208, R-1209, R-1210, R-1211, R-1212, R-1213, R-1214, R-1215, R-1216, R-1217, R-1218, R-1219, R-1220, R-1221, R-1222, R-1223, R-1224, R-1225, R-1226, R-1227, R-1228, R-1229, R-1230, R-1231, R-1232, R-1233, R-1234, R-1235, R-1236, R-1237, R-1238, R-1239, R-1240, R-1241, R-1242, R-1243, R-1244, R-1245, R-1246, R-1247, R-1248, R-1249, R-1250, R-1251, R-1252, R-1253, R-1254, R-1255, R-1256, R-1257, R-1258, R-1259, R-1260, R-1261, R-1262, R-1263, R-1264, R-1265, R-1266, R-1267, R-1268, R-1269, R-1270, R-1271, R-1272, R-1273, R-1274, R-1275, R-1276, R-1277, R-1278, R-1279, R-1280, R-1281, R-1282, R-1283, R-1284, R-1285, R-1286, R-1287, R-1288, R-1289, R-1290, R-1291, R-1292, R-1293, R-1294, R-1295, R-1296, R-1297, R-1298, R-1299, R-1300, R-1301, R-1302, R-1303, R-1304, R-1305, R-1306, R-1307, R-1308, R-1309, R-1310, R-1311, R-1312, R-1313, R-1314, R-1315, R-1316, R-1317, R-1318, R-1319, R-1320, R-1321, R-1322, R-1323, R-1324, R-1325, R-1326, R-1327, R-1328, R-1329, R-1330, R-1331, R-1332, R-1333, R-1334, R-1335, R-1336, R-1337, R-1338, R-1339, R-1340, R-1341, R-1342, R-1343, R-1344, R-1345, R-1346, R-1347, R-1348, R-1349, R-1350, R-1351, R-1352, R-1353, R-1354, R-1355, R-1356, R-1357, R-1358, R-1359, R-1360, R-1361, R-1362, R-1363, R-1364, R-1365, R-1366, R-1367, R-1368, R-1369, R-1370, R-1371, R-1372, R-1373, R-1374, R-1375, R-1376, R-1377, R-1378, R-1379, R-1380, R-1381, R-1382, R-1383, R-1384, R-1385, R-1386, R-1387, R-1388, R-1389, R-1390, R-1391, R-1392, R-1393, R-1394, R-1395, R-1396, R-1397, R-1398, R-1399, R-1400, R-1401, R-1402, R-1403, R-1404, R-1405, R-1406, R-1407, R-1408, R-1409, R-1410, R-1411, R-1412, R-1413, R-1414, R-1415, R-1416, R-1417, R-1418, R-1419, R-1420, R-1421, R-1422, R-1423, R-1424, R-1425, R-1426, R-1427, R-1428, R-1429, R-1430, R-1431, R-1432, R-1433, R-1434, R-1435, R-1436, R-1437, R-1438, R-1439, R-1440, R-1441, R-1442, R-1443, R-1444, R-1445, R-1446, R-1447, R-1448, R-1449, R-1450, R-1451, R-1452, R-1453, R-1454, R-1455, R-1456, R-1457, R-1458, R-1459, R-1460, R-1461, R-1462, R-1463, R-1464, R-1465, R-1466, R-1467, R-1468, R-1469, R-1470, R-1471, R-1472, R-1473, R-1474, R-1475, R-1476, R-1477, R-1478, R-1479, R-1480, R-1481, R-1482, R-1483, R-1484, R-1485, R-1486, R-1487, R-1488, R-1489, R-1490, R-1491, R-1492, R-1493, R-1494, R-1495, R-1496, R-1497, R-1498, R-1499, R-1500, R-1501, R-1502, R-1503, R-1504, R-1505, R-1506, R-1507, R-1508, R-1509, R-1510, R-1511, R-1512, R-1513, R-1514, R-1515, R-1516, R-1517, R-1518, R-1519, R-1520, R-1521, R-1522, R-1523, R-1524, R-1525, R-1526, R-1527, R-1528, R-1529, R-1530, R-1531, R-1532, R-1533, R-1534, R-1535, R-1536, R-1537, R-1538, R-1539, R-1540, R-1541, R-1542, R-1543, R-1544, R-1545, R-1546, R-1547, R-1548, R-1549, R-1550, R-1551, R-1552, R-1553, R-1554, R-1555, R-1556, R-1557, R-1558, R-1559, R-1560, R-1561, R-1562, R-1563, R-1564, R-1565, R-1566, R-1567, R-1568, R-1569, R-1570, R-1571, R-1572, R-1573, R-1574, R-1575, R-1576, R-1577, R-1578, R-1579, R-1580, R-1581, R-1582, R-1583, R-1584, R-1585, R-1586, R-1587, R-1588, R-1589, R-1590, R-1591, R-1592, R-1593, R-1594, R-1595, R-1596, R-1597, R-1598, R-1599, R-1600, R-1601, R-1602, R-1603, R-1604, R-1605, R-1606, R-1607, R-1608, R-1609, R-1610, R-1611, R-1612, R-1613, R-1614, R-1615, R-1616, R-1617, R-1618, R-1619, R-1620, R-1621, R-1622, R-1623, R-1624, R-1625, R-1626, R-1627, R-1628, R-1629, R-1630, R-1631, R-1632, R-1633, R-1634, R-1635, R-1636, R-1637, R-1638, R-1639, R-1640, R-1641, R-1642, R-1643, R-1644, R-1645, R-1646, R-1647, R-1648, R-1649, R-1650, R-1651, R-1652, R-1653, R-1654, R-1655, R-1656, R-1657, R-1658, R-1659, R-1660, R-1661, R-1662, R-1663, R-1664, R-1665, R-1666, R-1667, R-1668, R-1669, R-1670, R-1671, R-1672, R-1673, R-1674, R-1675, R-1676, R-1677, R-1678, R-1679, R-1680, R-1681, R-1682, R-1683, R-1684, R-1685, R-1686, R-1687, R-1688, R-1689, R-1690, R-1691, R-1692, R-1693, R-1694, R-1695, R-1696, R-1697, R-1698, R-1699, R-1700, R-1701, R-1702, R-1703, R-1704, R-1705, R-1706, R-1707, R-1708, R-1709, R-1710, R-1711, R-1712, R-1713, R-1714, R-1715, R-1716, R-1717, R-1718, R-1719, R-1720, R-1721, R-1722, R-1723, R-1724, R-1725, R-1726, R-1727, R-1728, R-1729, R-1730, R-1731, R-1732, R-1733, R-1734, R-1735, R-1736, R-1737, R-1738, R-1739, R-1740, R-1741, R-1742, R-1743, R-1744, R-1745, R-1746, R-1747, R-1748, R-1749, R-1750, R-1751, R-1752, R-1753, R-1754, R-1755, R-1756, R-1757, R-1758, R-1759, R-1760, R-1761, R-1762, R-1763, R-1764, R-1765, R-1766, R-1767, R-1768, R-1769, R-1770, R-1771, R-1772, R-1</p>				



FLOOR PLAN LEGEND



FLOOR PLAN GENERAL NOTES

- A. SEE A601 FOR PARTITION TYPES
- B. DIMENSIONS ARE AS FOLLOWS UNLESS COORDINATE ALL W/ WALL SECTIONS
 - * TO FINISHED FACE OF MASONRY WALL
 - * TO FACE OF BRICKTILE
 - * INTERIOR TO FINISHED FACE OF WALL
- C. SEE G2 FOR WINDOW TYPES
- D. PROVIDE FIRE STOPPING & DRAFT STOPPING AT ALL WALL, FLOOR AND CEILING PENETRATIONS
- E. ALL WOOD FLOORING IS TO BE FIRE RETARDANT. PROVIDE WOOD BLOCKING FOR ALL WALL MOUNTED ITEMS IN CORNER PARTITIONS.
- F. ALL WOOD FLOOR PARTITIONS TO MEET MFPA AND ASTM MINIMUM REQUIREMENTS FOR FIRE AND SMOKE SPREAD.

FLOOR PLAN / ROOF KEYED NOTES

1. FLAM BASE AND WALL CABINETS
2. LINE OF OVERHANG ROOF
3. SHEETING AND SHORING REFER STRUCTURAL DRAWINGS.
4. EXTERIOR FLEETED FIBER ENCLOSURE BY LIFT MFPA
5. ALTERNATING TREAD STAIR, GALV. FTD.
6. SUMP PUMP PFT. SEE PLUMBING.
7. STEEL PAN STAIR WITH 21 X 12 HES STRINGERS, BAR STOCK WALKING W/ PERFORATED METAL PANELS.
8. GRAVEL BORDER
9. FINISHES
10. PROPERTY LINE
11. RECESSED BANK OFF GRILLE
12. WALK OFF MAT
13. EXTENSIVE GREEN ROOF
14. TENSILE GREEN ROOF LAMIN AND PLANTING. REF. LANDSCAPE
15. METAL COPING
16. ST-1 CAP AND ST-4 VENEER AT SITE OR PARAPET WALL. SEE METAL DETAIL.
17. FENCING. REFER LANDSCAPE
18. GREENWALL. REFER LANDSCAPE
19. SCUPPER
20. SLANT SECTION DECK WITH SOLID SURFACE COUNTER AND TRANSACTION LEDGE
21. CONCRETE MASONRY. REFER LANDSCAPE
22. BKE RACKS. REFERENCE LANDSCAPE
23. SHEETING AND SHORING FOR RETAINING WALL WITH METAL PANEL FACING AND PRECAST CONCRETE CAP
24. WHITE PVC ROOFING
25. LANDSCAPE
26. GRAVEL BORDER
27. ALUMINUM LETTERING ON SUPPORTS
28. GRASS
29. DRAIN
30. FOR LADDER
31. MFP RACK - SEE BATH ACCESSORIES & TYP MOUNTING HTS
32. REC OR WALL MTD FIRE EXTINGUISHER. SEE PLANS
33. HOUSEKEEPING PAD - SEE MEP & STRUCT DWGS
34. WALL MTD METAL ACOUSTIC PANELS - SEE ELEV FOR MTD HT
35. DOOR ACTUATOR
36. ACCESS HATCH FOR EJECTOR PUMP - SEE PLUMB & POOL
37. BOLLARD W/ ACTUATOR & CARD READER MTD.
38. PREPARED CORRUGATED ALUMINUM ROOF
39. POWER STONES SET FLUSH W/ GREEN ROOF. SEE LANDSCAPE & ROOF TYPES

PROJECT

Hearst Park & Pool
3850 37th Street, NW
Washington, DC 20008

OWNER'S REPRESENTATIVE

Department of General Services
2000 14th Street NW, 8th Floor
Washington, DC 20009

ARCHITECT

cox grass + spack architects
2909 M Street NW
Washington, DC 20007
T: 202.965.7070
F: 202.965.7144

CIVIL ENGINEER

Wiles Menck Corporation
Address: 510 8th Street, SE
Washington, DC 20003
T: 202.436.9384

STRUCTURAL ENGINEER

Simpson Gumpertz & Heger Inc.
1623 Eye Street NW, Suite 900
Washington, DC 20006
T: 202.239.4199

MPE ENGINEER

Sety & Associates International, PLLC
Address: 5185 MacArthur Blvd., Suite 220
Washington, DC 20016
T: 202.393.1523

LANDSCAPE ARCHITECT

CGLA
1025 Connecticut Avenue NW, Suite 1000
Washington, DC 20036
T: 202.857.9700

POOL CONSULTANT

Counsellman-Hunsaker
10725 Sunset Office Ct., Suite 400
St. Louis, MO 63127
T: 314.894.1242

AVI / IT / ACOUSTICS CONSULTANT

Polysonics
405 Sully Rd Lane
Warrenton, VA 20186
T: 540.341.4986

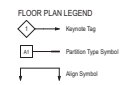
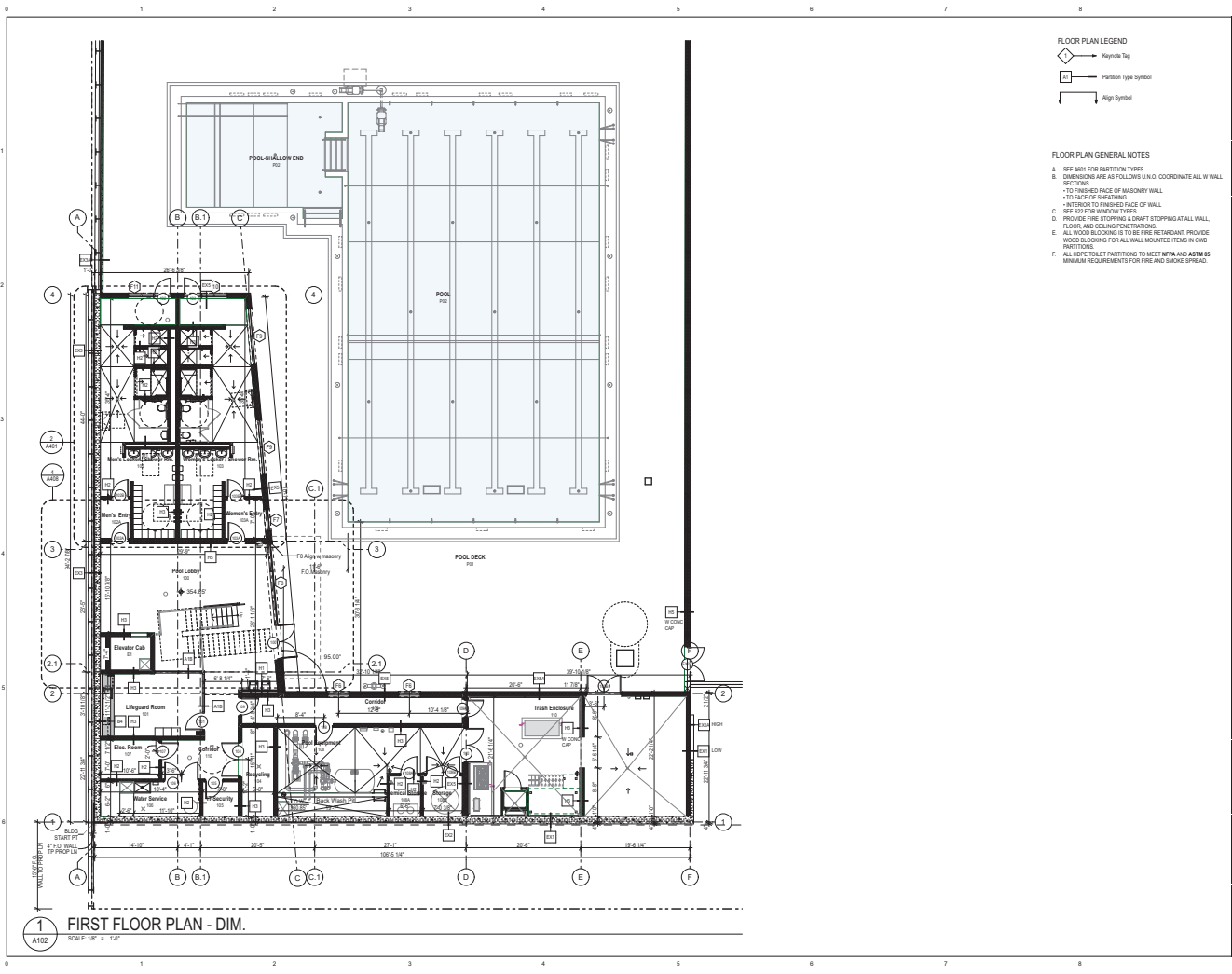


Mark	Date	Description
01	6/11/18	Design Development Set
02	11/20/18	FTG Permit Submission
03	02/06/19	Permit Submission
04	02/28/19	Pool Gutter Revision

Drawing Title:
FIRST FLOOR PLAN

Graphic Scale: 1/8" = 1'-0"

Project No: 1614 Date: 02/06/2019
Drawing No: A101



FLOOR PLAN GENERAL NOTES

- A. SEE A601 FOR PARTITION TYPES
- B. DIMENSIONS ARE AS FOLLOWS UNLESS COORDINATE ALL WALL SECTIONS
 - * TO FINISHED FACE OF MASONRY WALL
 - * TO FACE OF SIGHTING
 - * INTERIOR TO FINISHED FACE OF WALL
- C. SEE E2 FOR WINDOW TYPES
- D. PROVIDE FIRE STOPPING & DRAFT STOPPING AT ALL WALL, FLOOR AND CEILING PENETRATIONS
- E. ALL WOOD BUILDING IS TO BE FIRE RETARDANT PROVIDE WOOD BUILDING FOR ALL WALL, DOORCASES, TRIMS IN CORNER PARTITIONS.
- F. ALL HIRE TALEY PARTITIONS TO MEET MPFA AND ASTM # MINIMUM REQUIREMENTS FOR FIRE AND SMOKE SPREAD.

PROJECT
Hearst Park & Pool
 3850 37th Street, NW
 Washington, DC 20008

OWNER'S REPRESENTATIVE
Department of General Services
 2000 14th Street NW, 8th Floor
 Washington DC, 20009

ARCHITECT
cox grass + spack architects
 2909 M Street NW
 Washington DC 20007
 T: 202.965.7070
 F: 202.965.7144

CIVIL ENGINEER
Wiles Menck Corporation
 Address: 510 8th Street SE
 Washington DC 20003
 T: 202.436.9384

STRUCTURAL ENGINEER
Simpson Gumpertz & Heger Inc.
 1623 Eye Street NW, Suite 900
 Washington, DC 20006
 T: 202.238.4199

MPE ENGINEER
Setty & Associates International, PLLC
 Address: 5185 MacArthur Blvd., Suite 220
 Washington, DC 20016
 T: 202.393.1523

LANDSCAPE ARCHITECT
CGLA
 1025 Connecticut Avenue NW, Suite 1000
 Washington, DC 20036
 T: 202.857.9700

POOL CONSULTANT
Counsilman-Hunsaker
 10723 Sunset Office Ct., Suite 400
 St. Louis, MO 63127
 T: 314.894.1242

AV/ IT/ ACOUSTICS CONSULTANT
Polysonics
 605 Sully Rd Lane
 Warrenton, VA 20186
 T: 540.341.4986

Mark **Date** **Description**

01	6/11/18	Design Development Set
02	11/20/18	FTG Permit Submission
03	02/06/19	Permit Submission
04	02/28/19	Pool Gutter Revision

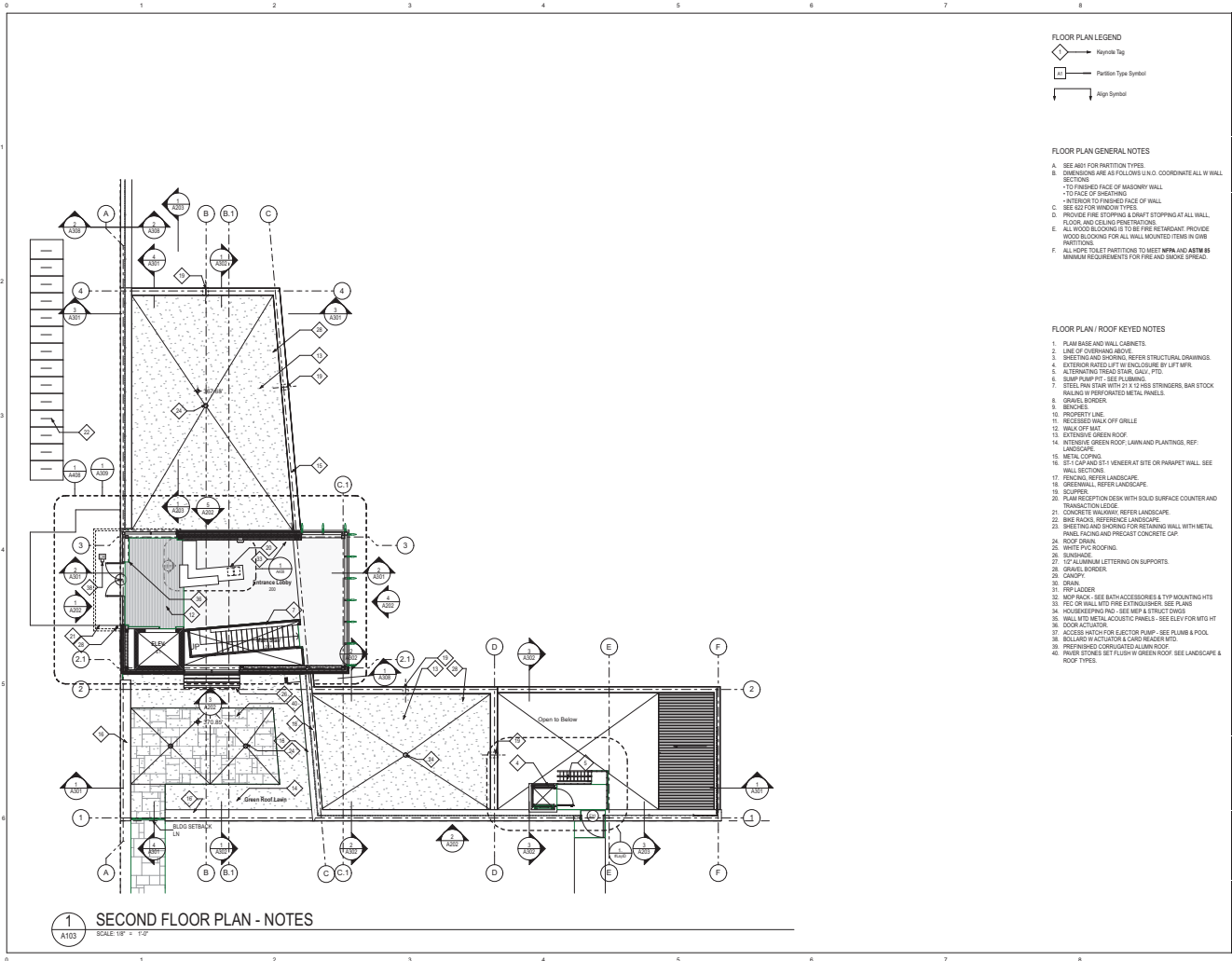
Drawing Title:
FIRST FLOOR DIMENSION PLAN

Graphic Scale: 1" = 1'-0"

Project No: 1614 Date: 02/06/2019
 Drawing No: **A102**

A102

copyright © cox grass + spack architects 2019



FLOOR PLAN LEGEND

- Keynote Tag
- Partition Type Symbol
- Align Symbol

FLOOR PLAN GENERAL NOTES

- A. SEE A61 FOR PARTITION TYPES
- B. DIMENSIONS ARE AS FOLLOWS UNLESS COORDINATE ALL WALL SECTIONS TO FINISHED FACE OF MASONRY WALL
- C. INTERIOR TO FINISHED FACE OF WALL
- D. SEE G2 FOR WINDOW TYPES
- E. PROVIDE FIRE STOPPING & DRAFT STOPPING AT ALL WALL, FLOOR AND CEILING PENETRATIONS
- F. ALL WOOD FLOORING IS TO BE FIRE RETARDANT. PROVIDE PROTECTIVE FINISH FOR ALL WALL MOUNTED ITEMS IN CORNER PARTITIONS.
- G. ALL WOOD FLOOR PARTITIONS TO MEET MPFA AND ASTM #3 MINIMUM REQUIREMENTS FOR FIRE AND SMOKE SPREAD.

FLOOR PLAN / ROOF KEYED NOTES

1. FLAM BASE AND WALL CABINETS
2. SHEETING AND SHORING. REFER STRUCTURAL DRAWINGS
3. EXTERIOR FINISH TO BE ENCLOSED BY 1/2" MPFA
4. ALTERNATING TREAD STEEL GRATE, F70
5. SLOPE TOWARD THE EXTERIOR
6. STEEL W/IN BEAM WITH 2" X 1/2" HES STRANGERS, BAR STOCK
7. WALKING W/ PERFORATED METAL PANELS
8. GRAVEL BORDER
9. BENCHES
10. PROPERTY LINE
11. RECESSED WALK OFF GRILLE
12. WALK OFF MAT
13. EXTENSIVE GREEN ROOF
14. EXTENSIVE GREEN ROOF LAWN AND PLANTING, REF. LANDSCAPE
15. METAL COPING
16. SET CAP AND ST+ VENEER AT SITE OR PARAPET WALL. SEE WALL SECTIONS
17. FENCING, REFER LANDSCAPE
18. GREENWALL, REFER LANDSCAPE
19. SCUPPER
20. FLOOR DRAINAGE DECK WITH SOLID SURFACE COUNTER AND TRANSITION LEDGE
21. CONCRETE WALKWAY, REFER LANDSCAPE
22. SEE FINISH REFERENCE LANDSCAPE
23. SHEETING AND SHORING FOR RETAINING WALL WITH METAL PANEL FINISH AND PRECAST CONCRETE CAP
24. ROOF DRAIN
25. WHITE PVC ROOFING
26. SUNSHADE
27. 1" ALUMINUM LETTERING ON SUPPORTS
28. GRAVEL BORDER
29. CANOPY
30. DRAIN
31. POOL LADDER
32. MIP BACK - SEE BATH ACCESSORIES & TYP MOUNTING HTS
33. REC OR WALL MTD FIRE EXTINGUISHER, SEE PLAN
34. HOUSEKEEPING RD - SEE MEP & STRUCT DWGS
35. WALL MTD METAL ACOUSTIC PANELS - SEE ELEV FOR MTD HT
36. DOOR ACTUATOR
37. ACCESS WITH CHAIR EJECTOR PUMP - SEE PLUMB & POOL
38. BELLING TRUCK (LUBRICANT CAR) REAR DRUM
39. PREFINISHED CORRUGATED ALUMINUM ROOF
40. FINER FIBER SET FLUSH W/ GREEN ROOF. SEE LANDSCAPE & ROOF TYPES

PROJECT

Hearst Park & Pool
3850 37th Street, NW
Washington, DC 20008

OWNER'S REPRESENTATIVE

Department of General Services
2000 14th Street NW, 8th Floor
Washington, DC 20009

ARCHITECT

cox grass + spack architects
2909 M Street NW
Washington, DC 20007
T: 202.965.7070
F: 202.965.7144

CIVIL ENGINEER

Wiles Menck Corporation
Address: 510 8th Street, SE
Washington, DC 20003
T: 202.436.9384

STRUCTURAL ENGINEER

Simpson Gumpertz & Heger Inc.
1623 Eye Street NW, Suite 900
Washington, DC 20006
T: 202.239.4199

MPE ENGINEER

Sety & Associates International, PLLC
Address: 9185 MacArthur Blvd., Suite 220
Washington, DC 20016
T: 202.993.1923

LANDSCAPE ARCHITECT

CGLA
1025 Connecticut Avenue NW, Suite 1000
Washington, DC 20036
T: 202.857.9700

POOL CONSULTANT

Counselman-Hunsaker
10725 Sunset Office Dr., Suite 400
St. Louis, MO 63127
T: 314.694.1242

AVI / IT / ACOUSTICS CONSULTANT

Polysonics
405 Sibley St. Lane
Warrenton, VA 20186
T: 540.341.4986



Mark	Date	Description
01	6/11/18	Design Development Set
02	11/20/18	FTG Permit Submission
03	02/06/19	Permit Submission
04	02/28/19	Pool Gutter Revision

Drawing Title:
SECOND FLOOR PLAN

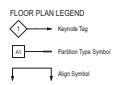
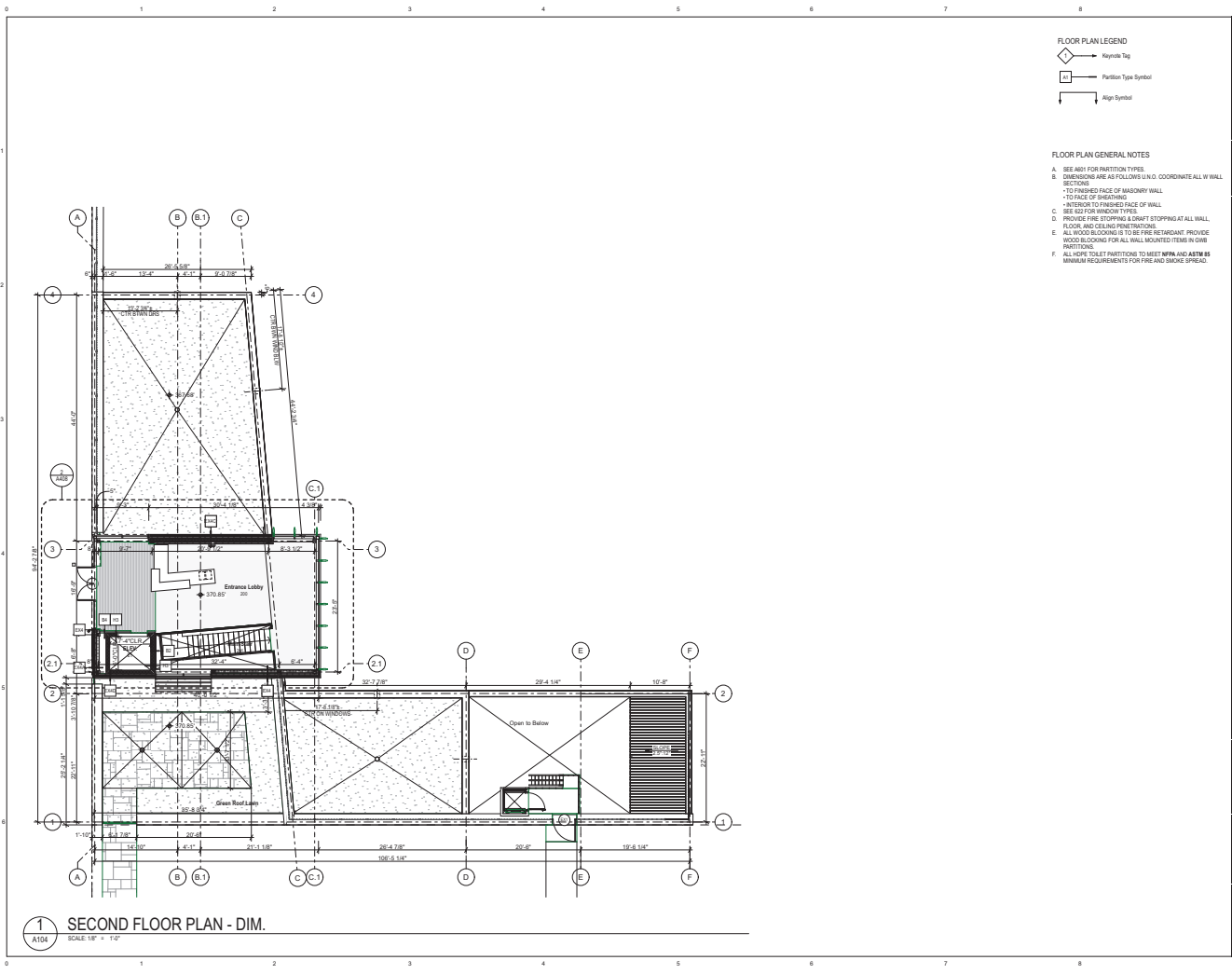
Graphic Scale: 1" = 1'-0"

Project No: 1614 Date: 02/06/2019

Drawing No: A103

copyright © cox grass + spack architects 2019

1 SECOND FLOOR PLAN - NOTES
SCALE: 1/8" = 1'-0"



FLOOR PLAN GENERAL NOTES

- SEE A601 FOR PARTITION TYPES
- DIMENSIONS ARE AS FOLLOWS UNLESS COORDINATE ALL WALL SECTIONS
 - * TO FINISHED FACE OF MASONRY WALL
 - * TO FACE OF SIGHTING
 - * INTERIOR TO FINISHED FACE OF WALL
- SEE E2 FOR WINDOW TYPES
- PROVIDE FIRE STOPPING & DRAFT STOPPING AT ALL WALL, FLOOR, AND CEILING PENETRATIONS
- ALL WOOD BUILDING IS TO BE FIRE RETARDANT PROVIDE WOOD BUILDING FOR ALL WALL, BOYCOTTED ITEMS IN OUR PARTITIONS
- ALL HOLE TAPEY PARTITIONS TO MEET NFPA AND ASTM MINIMUM REQUIREMENTS FOR FIRE AND SMOKE SPREAD

PROJECT
Hearst Park & Pool
 3850 37th Street, NW
 Washington, DC 20008

OWNER'S REPRESENTATIVE
Department of General Services
 2000 14th Street NW, 8th Floor
 Washington DC, 20009

ARCHITECT
cox grass + spack architects
 2909 M Street NW
 Washington DC 20007
 T: 202.965.7070
 F: 202.965.7144

CIVIL ENGINEER
Wiles Menach Corporation
 Address: 510 8th Street SE
 Washington DC 20003
 T: 202.436.9384

STRUCTURAL ENGINEER
Simpson Gumpertz & Heger Inc.
 1623 Eye Street NW, Suite 900
 Washington, DC 20006
 T: 202.239.4199

MPE ENGINEER
Setty & Associates International, PLLC
 Address: 5185 MacArthur Blvd., Suite 220
 Washington, DC 20016
 T: 202.393.1523

LANDSCAPE ARCHITECT
CGLA
 1025 Connecticut Avenue NW, Suite 1000
 Washington, DC 20036
 T: 202.857.9700

POOL CONSULTANT
Counsilman-Hunsaker
 10723 Sunset Office Dr., Suite 400
 St. Louis, MO 63127
 T: 314.894.1242

AV/ IT/ACOUSTICS CONSULTANT
Polysonics
 605 Sully Rd Lane
 Warrenton, VA 20185
 T: 543.341.4888

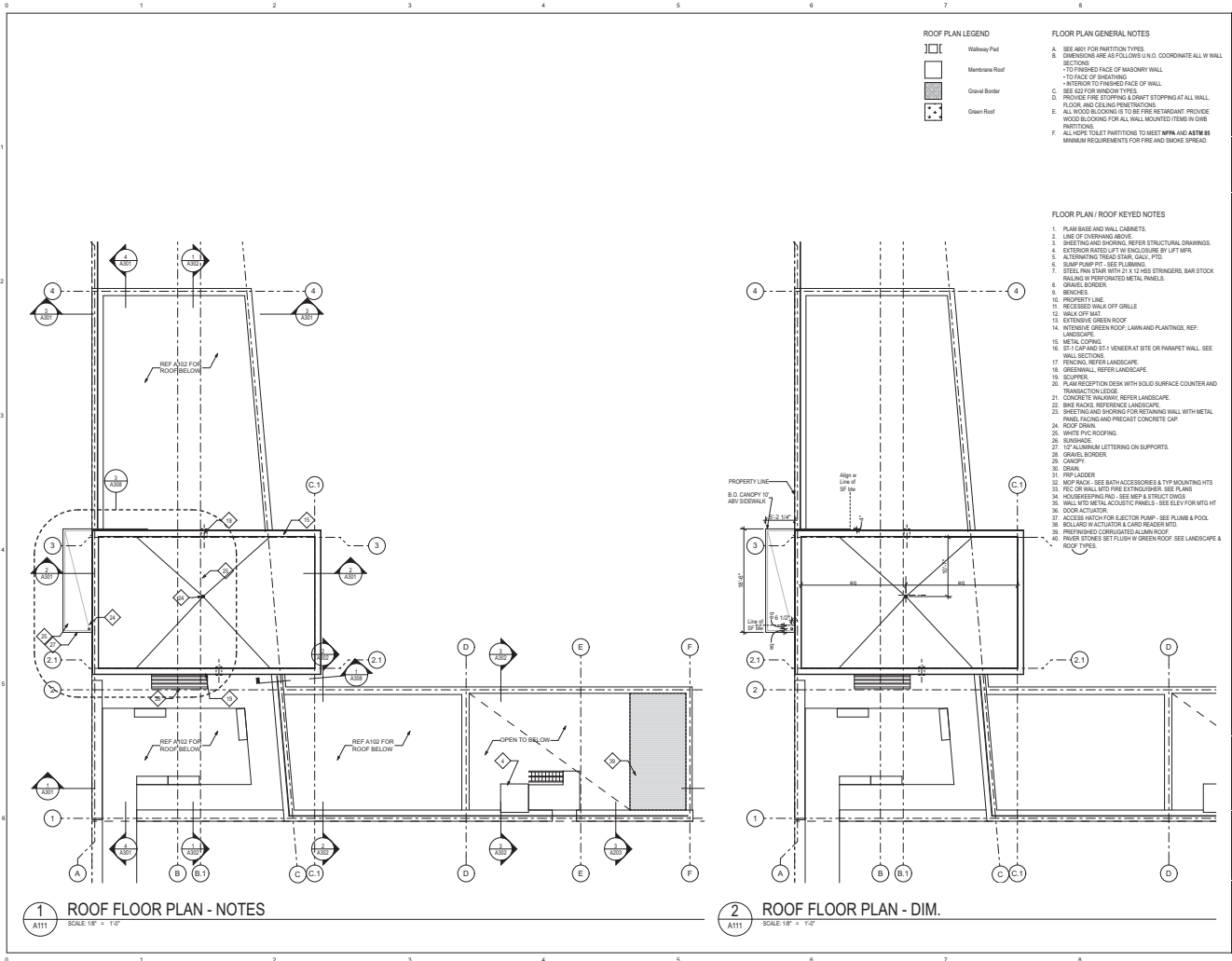
Mark	Date	Description
01	6/11/18	Design Development Set
02	11/20/18	FTG Permit Submission
03	02/06/19	Permit Submission
04	02/20/19	Pool Gutter Revision

Drawing Title:
SECOND FLOOR DIMENSION PLAN

Graphic Scale: 1" = 1'-0"

Project No: 1614 Date: 02/06/2019
 Drawing No: A104

copyright © cox grass + spack architects 2019



ROOF PLAN LEGEND

	Walkway Pad
	Membrane Roof
	Gravel Border
	Green Roof

- FLOOR PLAN GENERAL NOTES**
- SEE A101 FOR PARTITION TYPES.
 - DIMENSIONS ARE AS FOLLOWS UNLESS COORDINATE ALL W. WALL SECTIONS TO FINISHED FACE OF MASONRY WALL.
 - TO FACE OF SHEET-PILING INTERIOR TO FINISHED FACE OF WALL.
 - SEE A02 FOR WINDOW TYPES.
 - PROVIDE FIRE STOPPING & DRAFT STOPPING AT ALL WALL, FLOOR, AND CEILING PENETRATIONS.
 - ALL WOOD BLOCKING IS TO BE FIRE RETARDANT. PROVIDE WOOD BLOCKING FOR ALL WALL MOUNTED ITEMS IN GWS PARTITIONS.
 - ALL HIDE TOILET PARTITIONS TO MEET NFPA AND ASTM 88 MINIMUM REQUIREMENTS FOR FIRE AND SMOKE SPREAD.

- FLOOR PLAN / ROOF KEYED NOTES**
- FLAM BASE AND WALL CABINETS.
 - LINE OF OVERHANG ABOVE.
 - SHEETING AND SHOWING, REFER STRUCTURAL DRAWINGS.
 - EXTERIOR FINISH TO BE ENCLOSURE BY LFT MFR.
 - ALTERNATING TREAD STEAR, GRAY, FTD.
 - EMERGENCY EXIT, SEE PLUMBING.
 - STEEL PAN STAIR WITH 21 X 12 HSS STRINGERS, BAR STOCK TRUSLS W/ PERFORATED METAL PANELS.
 - GRAVEL BORDER.
 - BENCHES.
 - PROPERTY LINE.
 - RECESSED WALK OFF GRILLE.
 - WALK OFF MAT.
 - EXTENSIVE GREEN ROOF.
 - INTENSIVE GREEN ROOF, LAWN AND PLANTINGS, REF. LANDSCAPE.
 - SEWER COPING.
 - SE-1 CAP AND ST-1 VENEER AT SITE OR PARAPET WALL, SEE WALL SECTIONS.
 - FENCING, REFER LANDSCAPE.
 - GREENWALL, REFER LANDSCAPE.
 - SCUPPER.
 - FLAM RECEPTION DECK WITH SOLID SURFACE COUNTER AND TRANSACTION LEDGE.
 - CONCRETE WALKWAY, REFER LANDSCAPE.
 - BIKE RACKS, REFER LANDSCAPE.
 - SHEETING AND SHOWING FOR RETAINING WALL WITH METAL PANEL FACING AND PRECAST CONCRETE CAP.
 - ROOF DRAIN.
 - WHITE PVC ROOFING.
 - BENCHMARK.
 - ALUMINUM LETTERING ON SUPPORTS.
 - GRAVEL BORDER.
 - CANOPY.
 - TRIAL RAILS.
 - MIP BACK - SEE BATH ACCESSORIES & TYP MOUNTING HTS.
 - SEC. DR. WALL W/ FIRE STOPPING, SEE PLUMB.
 - HOUSEKEEPING RIG - SEE MEP & ELECTRIC DIVS.
 - WALL W/ METAL ACOUSTIC PANELS - SEE ELEV FOR MTD HT.
 - DOOR ACTUATOR.
 - ACCESS HATCH FOR EJECTOR PUMP - SEE PLUMB & POOL.
 - BOLLARD W/ ACTUATOR & CARD READER WTD.
 - PREFABRICATED CONCRETE ALUMINUM.
 - PAVER STONES SET FLUSH W/ GREEN ROOF. SEE LANDSCAPE & ROOF TYPES.

PROJECT
Hearst Park & Pool
 3850 37th Street, NW
 Washington, DC 20008

OWNER'S REPRESENTATIVE
Department of General Services
 2000 14th Street NW, 8th Floor
 Washington DC, 20009

ARCHITECT
cox graa + spack architects
 2009 M Street NW
 Washington DC 20007
 T: 202.965.7070
 F: 202.965.7144

CIVIL ENGINEER
Wilens Menck Corporation
 Address: 510 8th Street SE
 Washington DC 20003
 T: 202.436.9384

STRUCTURAL ENGINEER
Simpson Gumpertz & Heger Inc.
 1623 Eye Street NW, Suite 900
 Washington, DC 20006
 T: 202.239.4199

MPE ENGINEER
Setty & Associates International, PLLC
 Address: 5185 MacArthur Blvd., Suite 220
 Washington, DC 20016
 T: 202.993.1923

LANDSCAPE ARCHITECT
CGLA
 1025 Connecticut Avenue NW, Suite 1000
 Washington, DC 20036
 T: 202.857.9700

POOL CONSULTANT
Councilman-Hunsaker
 10725 Sunset Office Cir., Suite 400
 St. Louis, MO 63127
 T: 314.894.1242

AVI / IT / ACOUSTICS CONSULTANT
Polysonics
 405 Sibley Rd Lane
 Warrenton, VA 20186
 T: 543.341.4988

Mark **Date** **Description**
 01 6/11/18 Design Development Set
 02 11/20/18 FTG Permit Submission
 03 02/06/19 Permit Submission
 04 02/28/19 Pool Gutter Revision

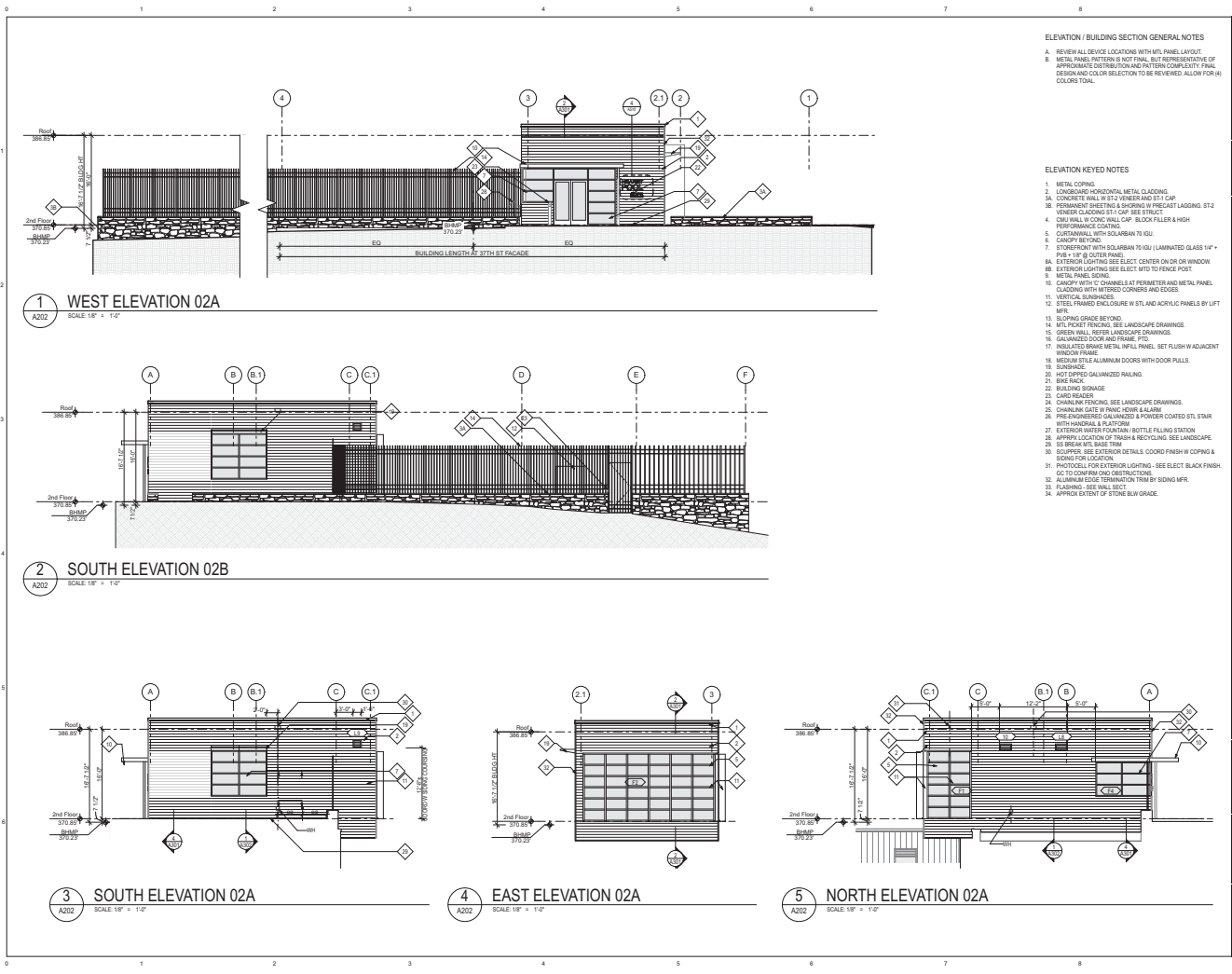
Drawing Title:
ROOF PLANS

Graphic Scale: 1" = 1'-0"

Project No: **Date:**
 1614 02/06/2019

Drawing No:
A111

copyright © cox graa + spack architects 2019



ELEVATION / BUILDING SECTION GENERAL NOTES

- A. REVIEW ALL DEVICE LOCATIONS WITH METAL PANEL LAYOUT.
- B. METAL PANEL PATTERN IS NOT FINAL, BUT REPRESENTATIVE OF APPROXIMATE DISTRIBUTION AND PATTERN COMPLEXITY. FINAL DESIGN AND COLOR SELECTION TO BE REVIEWED, ALLOW FOR HUE COLORS TOTAL.

ELEVATION KEYED NOTES

1. METAL COPING
2. LONGSHORR HORIZONTAL METAL CLADDING
- 3A. CONCRETE WALL W/ ST-1 VENEER AND ST-1 CAP
- 3B. PERMANENT SHEETING & SHORING W/ PRECAST LANSING ST-2 VENEER CLADDING ST-1 CAP. SEE STRUCT.
4. CMU WALL W/ CONC. FULL CAP, BLOCK FILLER & HIGH PERFORMANCE COATING
5. CURTAINWALL WITH SOLARBAN TO SGL
6. CASPIFF SYSTEM
7. STONEFRONT WITH SOLARBAN TO SGL (LAMINATED GLASS 1/4" PVB + 1/8" SOLARBAN)
- 8A. EXTERIOR LIGHTING SEE ELEC. CENTER ON OR ON WINDOW
- 8B. EXTERIOR LIGHTING SEE ELEC. MID TO FENCE POST
9. METAL PANEL SIDING
10. CANOPY WITH C CHANNELS AT PERIMETER AND METAL PANEL CLADDING WITH INTERED CORNERS AND EDGES
11. VERTICAL SUBRAISES
12. STEEL FRAMED ENCLOSURE W/ STL AND ACRYLIC PANELS BY LIFT MFL
13. SLOPING GRADE BEYOND
14. MFL POINT FINISHING. SEE LANDSCAPE DRAWINGS
15. GREEN WALL. REFER LANDSCAPE DRAWINGS
16. GAINANCED DOOR AND FRAME. FTD
17. INSULATED BRASS METAL INFILL PANEL. SET FLUSH W ADJACENT WINDOW FRAME
18. MEDIUM TILE ALUMINUM DOORS WITH DOOR PULLS. SUBRAISE
19. HOT SPOTTED GALVANIZED RAILING
20. BIKE RACK
21. BUILDING SIGNAGE
22. CARD READER
23. CHAIN LINK FENCING. SEE LANDSCAPE DRAWINGS
24. CHAIN LINK GATE W/ PANG-HOUB & ALARM
25. PRE-ENGINEERED GALVANIZED SPOUNDER COATED STL STAIR WITH HANDRAIL & PLATFORM
26. EXTERIOR WATER FOOTCATH. BOTTLE FILLING STATION
27. APPROP. LOCATION OF TRASH & RECYCLING STATION
28. S3 BREAK SLIT BASE TRIM
29. SCULPERS. SEE EXTERIOR DETAILS. COORD FINISH W COPING & SIGNING FOR LOCATION
30. PHOTOCELL FOR EXTERIOR LIGHTING - SEE ELEC. BLACK FINISH DC TO CONTROL AND RESTRICTIONS
31. ALUMINUM EDGE TERMINATION TRIM BR 90 BOND MFR.
32. FLASHINGS. SEE WALL SECT
33. APPROX. EXTENT OF STONE SLOPE GRADE

PROJECT
Hearst Park & Pool
 3850 37th Street, NW
 Washington, DC 20008

OWNER'S REPRESENTATIVE
Department of General Services
 2000 14th Street NW, 8th Floor
 Washington, DC 20009

ARCHITECT
cox graa + spack architects
 2909 M Street NW
 Washington, DC 20007
 T: 202.965.7070
 F: 202.965.7144

CIVIL ENGINEER
Wiles Menck Corporation
 Address: 510 8th Street SE
 Washington, DC 20003
 T: 202.436.9384

STRUCTURAL ENGINEER
Simpson Gumpertz & Heger Inc.
 1623 Eye Street NW, Suite 900
 Washington, DC 20006
 T: 202.239.4199

MPE ENGINEER
Setty & Associates International, PLLC
 Address: 9185 Blackthorn Blvd., Suite 200
 Washington, DC 20016
 T: 202.393.1023

LANDSCAPE ARCHITECT
CGLA
 1025 Connecticut Avenue NW, Suite 1000
 Washington, DC 20036
 T: 202.857.9700

POOL CONSULTANT
Counsilman-Hunsaker
 10725 Sunset Office Dr., Suite 400
 St. Louis, MO 63127
 T: 314.894.1242

AV/IT/ACOUSTICS CONSULTANT
Polysonics
 405 Sibley Lane
 Warrenton, VA 20185
 T: 540.341.4986

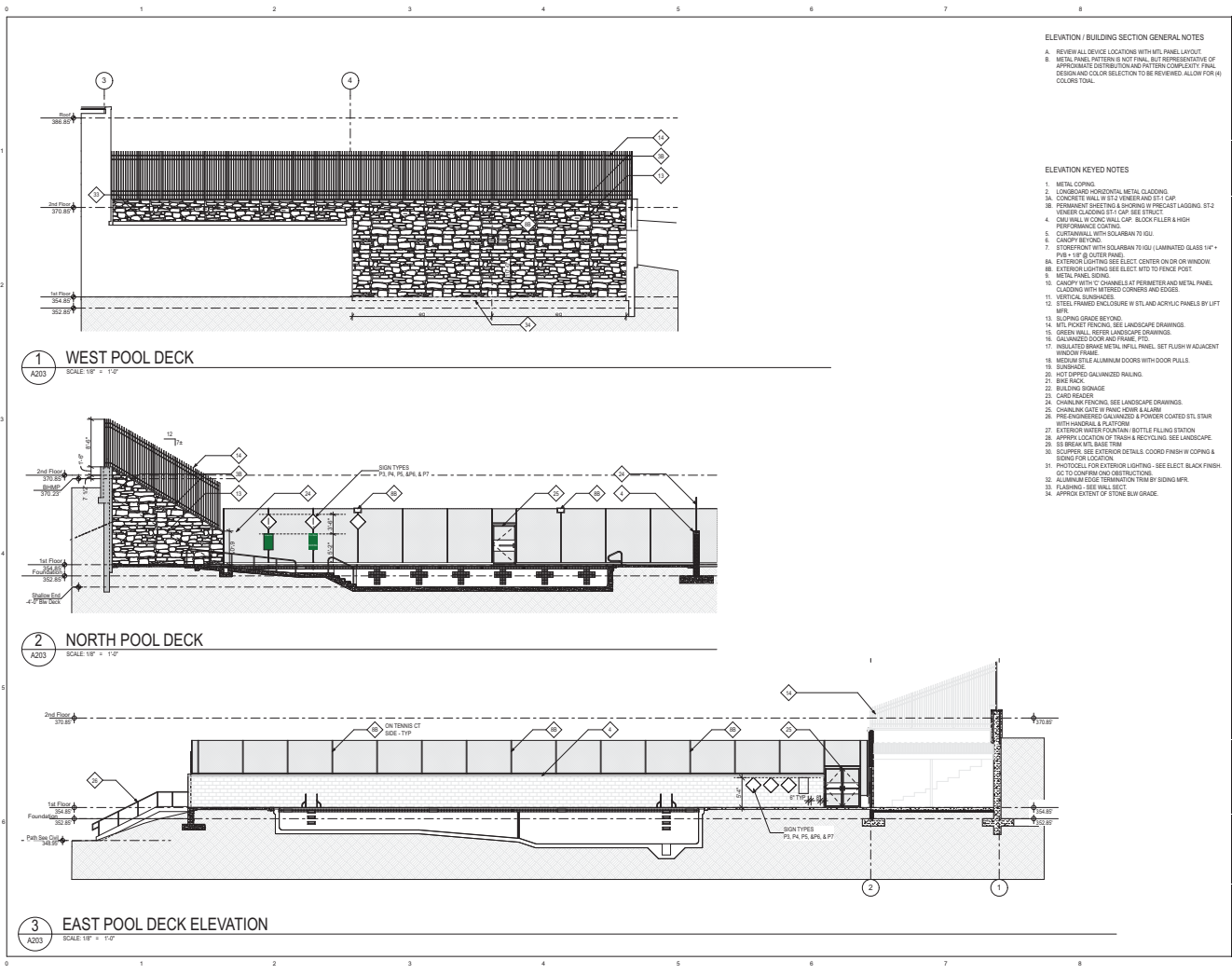
Mark Date Description
 01 6/11/18 Design Development Set
 02 11/20/18 FTG Permit Submission
 03 02/06/19 Permit Submission
 04 02/28/19 Pool Gutter Revision

Drawing Title:
BUILDING EXTERIOR ELEVATIONS

Graphic Scale: 1/8" = 1'-0"

Project No: 1614 Date: 02/06/2019
 Drawing No: A202

copyright © cox graa + spack architects 2019



ELEVATION / BUILDING SECTION GENERAL NOTES

- A. REVIEW ALL DEVICE LOCATIONS WITH METAL PANEL LAYOUT.
- B. METAL PANEL PATTERNS IS NOT FINAL, BUT REPRESENTATIVE OF APPROXIMATE DISTRIBUTION AND PATTERN COMPLEXITY. FINAL DESIGN AND COLOR SELECTION TO BE REVIEWED AGAIN FOR ALL COLORS TOTAL.

ELEVATION KEYED NOTES

1. METAL COPING
2. LONGSHORER HORIZONTAL METAL CLADDING
- 3A. CONCRETE WALL W/ ST-V VENEER AND ST-1 CAP
- 3B. PERMANENT SHEETING & SHORING W/ PRECAST LANSING ST-2 VENEER CLADDING ST-1 CAP. SEE STRUCT.
4. CMU WALL W/ CONC. HALL CAP. BLOCK FILLER & HIGH PERFORMANCE COATING
5. CUSTOM WALL WITH SOLARBAN TO SOU
6. CRADLE BELTING
7. STONEFRONT WITH SOLARBAN TO SOU (LAMINATED GLASS 1/4" PVB - 1/8" SECTION PANEL)
- 8A. EXTERIOR LIGHTING SEE ELECT CENTER ON OR ON WINDOW
- 8B. EXTERIOR LIGHTING SEE ELECT W/D TO FENCE POST
9. METAL PANEL SIDING
10. CANSOPY WITH C CHANNELS AT HEADS AND METAL PANEL CLADDING WITH INTERED CORNERS AND EDGES
11. VERTICAL SUBRAISES
12. STEEL FRAMED ENCLOSURE W/ STL AND ACRYLIC PANELS BY LIFT MFL
13. SLOPING GRADE BEYOND
14. MFL POINT FINISHING. SEE LANDSCAPE DRAWINGS
15. GREEN WALL. REFER LANDSCAPE DRAWINGS
16. DAMAGED DOOR AND FRAME. FTD
17. INSULATED BRASS METAL INFILL PANEL. SET FLUSH W/ ADJACENT WINDOW FRAME
18. MEDIUM TILE ALUMINUM DOORS WITH DOOR PULLS. SUBRAISE
19. HOT SPOT DRUMMED RAILING
20. BIKE RACK
21. BUILDING SIGNAGE
22. CARD READER
23. CHAIN LINK FENCING. SEE LANDSCAPE DRAWINGS
24. CHAIN LINK GATE W/ PANG-HOUB & ALARM
25. PRE-ENGINEERED GALVANIZED SPOUNDER COATED STL STAIR WITH HANDRAIL & PLATFORM
26. EXTERIOR WASTE POUCHES & BOTTLE FILLING STATION
27. APPROPRIATE LOCATION OF TRASH & RECYCLING. SEE LANDSCAPE
28. ST BREAK MET. BASE TRIM
29. SCUPPER. SEE EXTERIOR DETAILS. COORD FINISH W/ COPING & SIGNING FOR LOCATION
30. PHOTOCELL FOR EXTERIOR LIGHTING - SEE ELECT BLACK FINISH. QC TO OVERHEAD OBSTRUCTIONS
31. ALUMINUM EDGE TERMINATION TRIM BY SONING MFR.
32. FLASHING. SEE WALL SECT
33. APPROX EXTENT OF STONE BLIN GRADE

1 WEST POOL DECK
SCALE: 1/8" = 1'-0"
A203

2 NORTH POOL DECK
SCALE: 1/8" = 1'-0"
A203

3 EAST POOL DECK ELEVATION
SCALE: 1/8" = 1'-0"
A203

PROJECT
Hearst Park & Pool
3850 37th Street, NW
Washington, DC 20008

OWNER'S REPRESENTATIVE
Department of General Services
2000 14th Street NW, 8th Floor
Washington DC, 20009

ARCHITECT
cox graa + spack architects
2909 M Street NW
Washington DC 20007
T: 202 965 7070
F: 202 965 7144

CIVIL ENGINEER
Wiles Menck Corporation
Address: 510 8th Street SE
Washington DC 20003
T: 202 436 9384

STRUCTURAL ENGINEER
Simpson Gumpertz & Heger Inc.
Address: 510 8th Street SE
Washington, DC 20008
T: 202 238 4199

MPE ENGINEER
Setty & Associates International, PLLC
Address: 9185 Blackthorn Blvd., Suite 220
Washington, DC 20016
T: 202 393 1923

LANDSCAPE ARCHITECT
GCLA
1025 Connecticut Avenue NW, Suite 1000
Washington, DC 20036
T: 202 857 9700

POOL CONSULTANT
Counsilman-Hunsaker
10725 Sunset Office Dr., Suite 400
St. Louis, MO 63127
T: 314 894 1242

AV/ IT/ACOUSTICS CONSULTANT
Polysonics
405 Sibley Rd Lane
Warrenton, VA 20185
T: 540 341 4988

Mark **Date** **Description**
01 6/11/18 Design Development Set
02 11/20/18 FTG Permit Submission
03 02/06/19 Permit Submission
04 02/28/19 Pool Gutter Revision

Drawing Title:
BUILDING SITE ELEVATIONS

Graphic Scale:

Project No: 1614 **Date:** 02/06/2019
Drawing No: A203

copyright © cox graa + spack architects 2019